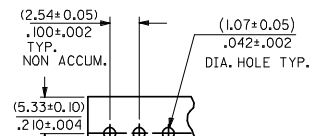
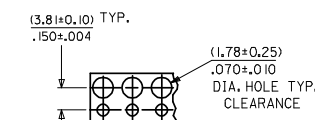
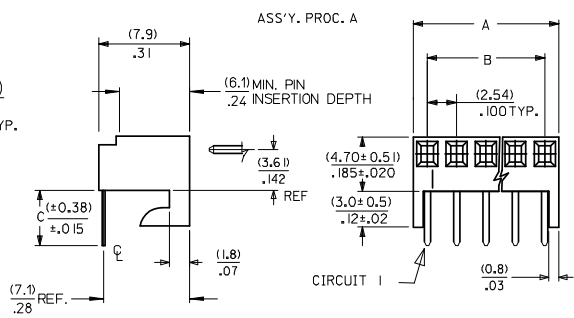


NO. OF CKTS.	DIM. A	DIM. B
1	(2.44±.15) .096±.006	—
2	(4.98±.15) .196±.006	(2.54±.10) .100±.004
3	(7.52±.15) .296±.006	(5.08±.10) .200±.004
4	(10.06±.15) .396±.006	(7.62±.10) .300±.004
5	(12.60±.18) .496±.007	(10.16±.13) .400±.005
6	(15.14±.18) .596±.007	(12.70±.13) .500±.005
7	(17.68±.20) .696±.008	(15.24±.15) .600±.006
8	(20.22±.20) .796±.008	(17.78±.15) .700±.006
9	(22.76±.20) .896±.008	(20.32±.15) .800±.006
10	(25.30±.25) .996±.010	(22.86±.20) .900±.008
11	(27.84±.25) 1.096±.010	(25.40±.20) 1.000±.008
12	(30.38±.25) 1.196±.010	(27.94±.20) 1.100±.008
13	(32.92±.25) 1.296±.010	(30.48±.20) 1.200±.008
14	(35.46±.25) 1.396±.010	(33.02±.20) 1.300±.008
15	(38.00±.28) 1.496±.011	(35.56±.23) 1.400±.009
16	(40.54±.28) 1.596±.011	(38.10±.23) 1.500±.009
17	(43.08±.28) 1.696±.011	(40.64±.23) 1.600±.009
18	(45.62±.28) 1.796±.011	(43.18±.23) 1.700±.009
19	(48.16±.28) 1.896±.011	(45.72±.23) 1.800±.009
20	(50.70±.30) 1.996±.012	(48.26±.25) 1.900±.010
21	(53.24±.30) 2.096±.012	(50.80±.25) 2.000±.010
22	(55.78±.30) 2.196±.012	(53.34±.25) 2.100±.010
23	(58.32±.30) 2.296±.012	(55.88±.25) 2.200±.010
24	(60.86±.30) 2.396±.012	(58.42±.30) 2.300±.012
25	(63.40±.38) 2.496±.015	(60.96±.30) 2.400±.012

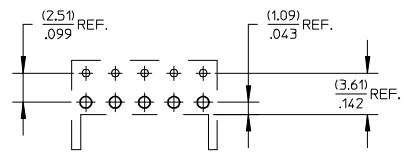
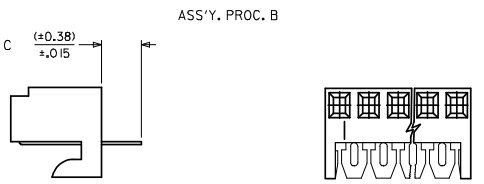
STANDARD HOUSING SHOWN
(4455-N OR 4455-N2)



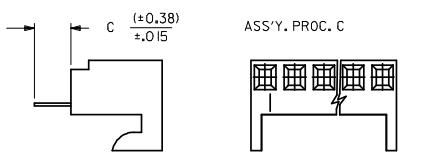
RECOMMENDED P.C. BOARD LAYOUT
FOR ASS'Y. PROC. A



RECOMMENDED P.C. BOARD LAYOUT
FOR ASS'Y. PROC. B



RECOMMENDED P.C. BOARD LAYOUT
FOR ASS'Y. PROC. C



- NOTES:
1. MATERIAL: NYLON, UL 94V-0, COLOR: WHITE
2. FINISH:

- (122) - OVERALL TIN: (0.00381)/.000150 MIN. OVER NICKEL: (0.000761)/.000030 MIN.
*(208) - SELECT GOLD: (0.000381)/.000015 MIN. SELECT TIN: (0.002541)/.000100 MIN.
OVERALL NICKEL UNDERPLATE: (0.001271)/.000050 MIN.
*(228) - SELECT GOLD: (0.000761)/.000030 MIN. SELECT TIN: (0.002541)/.000100 MIN.
OVERALL NICKEL UNDERPLATE: (0.001271)/.000050 MIN.
(231) - SELECT GOLD: (0.001271)/.000050 MIN. SELECT TIN: (0.002541)/.000100 MIN.
OVERALL NICKEL UNDERPLATE: (0.001271)/.000050 MIN.
(565) - SELECT GOLD: (0.000511)/.000020 MIN. OVERALL NICKEL: (0.000761)/.000030 MIN.
OVERALL GOLD FLASH: (0.000051)/.000002 MIN.
*(P909) - OVERALL TIN: (0.002541)/.000100 MIN.
*THE PRIMARY SHIPPING CARTON WILL BE LABELED "COMPLIANT TO RoHS
DIRECTIVE 2002/95/EC AND ELV ANNEX II OF DIRECTIVE 2000/53/EC."
CARTONS WITHOUT THIS LABEL MAY CONTAIN PRODUCT WITH TIN-LEAD PLATING.
3. PARTS CONFORM TO PRODUCT SPECIFICATION PS-10-07.
4. PACKAGING: SEE CHARTS.
5. PARTS MUST CONFORM TO SOLDERABILITY SPEC 152.
6. PARTS ARE STACKABLE END TO END ON (2.54)/.100 CENTERS.
7. TYPICAL PCB THICKNESS: (.157)/.062
8. PART CONFORMS TO CLASS B REQUIREMENTS OF COSMETIC SPECIFICATION PS-45499-002.

HOUSING OPTION A 4455-AN	
4455-N HOUSING WITH CENTER HOOK	
HOUSING OPTION B 4455-BN	
4455-N HOUSING WITH RAMP AND POLARIZING	
HOUSING OPTION E 4455-NHH	
4455-N HOUSING WITH REINFORCED HOOKS	
HOUSING OPTION H 4455-N2	
STANDARD HOUSING	
HOUSING OPTION P 4455-NR	
4455-N WITH RAMP (PCB HOOKS CUT OFF)	
HOUSING OPTION R 4455-NR	
4455-N WITH RAMP	
HOUSING OPTION W 4455-N	
4455-N-2 MOLDED VOID IN CKT 2 (PC BOARD HOOKS CUT OFF)	
HOUSING OPTION Y 4455-N	
4455-N WITH PC BOARD HOOKS CUT OFF	

2-16	D5
1	D5
SHT.	REV.

ADD P/N	EC NO: UCP2008-1384	DRWN:ADERR 2007/12/21	CHKD:AEHLG 2007/12/21	APPR:FSM/TH 2007/12/21	DESCRIPTION	REV	QUALITY SYMBOLS	GENERAL TOLERANCES (UNLESS SPECIFIED)		DIMENSION STYLE		SCALE	DESIGN UNITS	THIRD ANGLE PROJECTION	TITLE
								mm	INCH	MM/IN	---	INCH			
D5							▼=0 ▽=0	4 PLACES	±---	±---	DRAWN BY	DATE	TITLE	KK 100 PCB ASSY 4455 SERIES DWG	
								3 PLACES	±---	±.010	SAMIEC	10/5/84			
								2 PLACES	±.25	±.015	CHECKED BY	DATE			
								1 PLACE	±0.36	±---	PATEL	10/5/84			
								ANGULAR ±1/2°			APPROVED BY	DATE			
DRAFT WHERE APPLICABLE MUST REMAIN WITHIN DIMENSIONS			LENZ	10/5/84	MATERIAL NO.	DOCUMENT NO.	SHEET NO.								
			SEE CHART	SDA-4455	MOLEX INCORPORATED		1 OF 16								
SIZE B		THIS DRAWING CONTAINS INFORMATION THAT IS PROPRIETARY TO MOLEX INCORPORATED AND SHOULD NOT BE USED WITHOUT WRITTEN PERMISSION													



KK 100 PCB ASSY 2-25 CKT

4455 SERIES

STANDARD PRODUCT

SDA-4455- * * N * * - *

ASSY PROCEDURE
 A=RIGHT ANGLE
 B=BOTTOM ENTRY
 C=TOP ENTRY

HOUSING TYPE
 A=4455-AN
 B=4455-BN
 E=4455-NHH
 H=4455-N2
 P=4455-NR (HOOKS CUT OFF)
 R=4455-NR
 W=4455-N-2 (HOOKS CUT OFF)
 Y=4455-N (HOOKS CUT OFF)

NO OF CIRCUITS

TERMINAL TYPE

Code	Number	Material	Form
A	4316-4	Brass	Standard
B	6516-4	Phos Bronze	Standard
D	4316-3B	Brass	Std / V
G	4316-3	Brass	Standard
J	6516-3B	Phos Bronze	Std / V
L	6516-3C	Phos Bronze	Cat Ear / V
M	6516-4A	Phos Bronze	Cat Ear
S	30432-0200	Phos Bronze	Humpback
T	4316-4A	Brass	Cat Ear

PLATING
 (SEE SHEET 1)

VOID LOCATION

Assy Proc:	RIGHT ANGLE
Hooks Cut:	NO
Housing No:	4455-N
Terminal No:	4316-4(P909)
Dim C:	3.35 / .132
Plating:	P909
Packaging:	PK-44646-001
Voids:	NONE

Assy Proc:	RIGHT ANGLE
Hooks Cut:	NO
Housing No:	4455-N
Terminal No:	4316-4(565)
Dim C:	3.35 / .132
Plating:	565
Packaging:	PK-44646-001
Voids:	NONE

Ckts	Material No	Engineer Number
2	22-15-2026	A-4455-AZ02A(P909)
3	22-15-2036	A-4455-AZ03A(P909)
4	22-15-2046	A-4455-AZ04A(P909)
5	22-15-2056	A-4455-AZ05A(P909)
6	22-15-2066	A-4455-AZ06A(P909)
7	22-15-2076	A-4455-AZ07A(P909)
8	22-15-2086	A-4455-AZ08A(P909)
9	22-15-2096	A-4455-AZ09A(P909)
10	22-15-2106	A-4455-AZ10A(P909)
11	22-15-2116	A-4455-AZ11A(P909)
12	22-15-2126	A-4455-AZ12A(P909)
13	22-15-2136	A-4455-AZ13A(P909)
14	22-15-2146	A-4455-AZ14A(P909)
15	22-15-2156	A-4455-AZ15A(P909)
16	22-15-2166	A-4455-AZ16A(P909)
17	22-15-2176	A-4455-AZ17A(P909)
18	22-15-2186	A-4455-AZ18A(P909)
19	22-15-2196	A-4455-AZ19A(P909)
20	22-15-2206	A-4455-AZ20A(P909)
21	22-15-2216	A-4455-AZ21A(P909)
22	22-15-2226	A-4455-AZ22A(P909)
23	22-15-2236	A-4455-AZ23A(P909)
24	22-15-2246	A-4455-AZ24A(P909)
25	22-15-2256	A-4455-AZ25A(P909)

Material No	Engineer Number
22-16-2021	A-4455-AZ02A(565)
22-16-2031	A-4455-AZ03A(565)
22-16-2041	A-4455-AZ04A(565)
22-16-2051	A-4455-AZ05A(565)
22-16-2061	A-4455-AZ06A(565)
22-16-2071	A-4455-AZ07A(565)
22-16-2081	A-4455-AZ08A(565)
22-16-2091	A-4455-AZ09A(565)
22-16-2101	A-4455-AZ10A(565)
22-16-2111	A-4455-AZ11A(565)
22-16-2121	A-4455-AZ12A(565)
22-16-2131	A-4455-AZ13A(565)
22-16-2141	A-4455-AZ14A(565)
22-16-2151	A-4455-AZ15A(565)
22-16-2161	A-4455-AZ16A(565)
22-16-2171	A-4455-AZ17A(565)
22-16-2181	A-4455-AZ18A(565)
22-16-2191	A-4455-AZ19A(565)
22-16-2201	A-4455-AZ20A(565)
22-16-2211	A-4455-AZ21A(565)
22-16-2221	A-4455-AZ22A(565)
22-16-2231	A-4455-AZ23A(565)
22-16-2241	A-4455-AZ24A(565)
22-16-2251	A-4455-AZ25A(565)

REV: D5	ECR/ECN INFORMATION: EC No.: UCP2008-1384 DATE: 12/21/2007	TITLE: KK 100 PCB ASSY 4455 SERIES DWG	SHEET No. - 2 -
DOCUMENT NUMBER: SDA-4455	CREATED / REVISED BY: ADERR	CHECKED BY: AELHAG	APPROVED BY: FSMITH



KK 100 PCB ASSY 2-25 CKT

4455 SERIES

STANDARD PRODUCT

Ckts	Assy Proc: RIGHT ANGLE		Assy Proc: BOTTOM ENTRY		Assy Proc: BOTTOM ENTRY		Assy Proc: BOTTOM ENTRY	
	Hooks Cut:	NO	Hooks Cut:	NO	Hooks Cut:	NO	Hooks Cut:	NO
	Housing No:	4455-N	Housing No:	4455-N2	Housing No:	4455-N2	Housing No:	4455-N2
	Terminal No:	4316-4(208)	Terminal No:	4316-3B(P909)	Terminal No:	4316-3B(565)	Terminal No:	4316-3B(208)
	Dim C:	3.35 / .132	Dim C:	3.35 / .132	Dim C:	3.35 / .132	Dim C:	3.35 / .132
	Plating:	208	Plating:	P909	Plating:	565	Plating:	208
	Packaging:	PK-44646-001	Packaging:	PK-44646-001	Packaging:	PK-44646-001	Packaging:	PK-44646-001
	Voids:	NONE	Voids:	NONE	Voids:	NONE	Voids:	NONE
	Material No	Engineer Number	Material No	Engineer Number	Material No	Engineer Number	Material No	Engineer Number
2	22-16-2020	A-4455-AZ02A(208)	22-14-2024	A-4455-BH02D(P909)	22-17-2022	A-4455-BH02D(565)	22-17-3022	A-4455-BH02D(208)
3	22-16-2030	A-4455-AZ 03 A(208)	22-14-2034	A-4455-BH 03 D(P909)	22-17-2032	A-4455-BH 03 D(565)	22-17-3032	A-4455-BH 03 D(208)
4	22-16-2040	A-4455-AZ 04 A(208)	22-14-2044	A-4455-BH 04 D(P909)	22-17-2042	A-4455-BH 04 D(565)	22-17-3042	A-4455-BH 04 D(208)
5	22-16-2050	A-4455-AZ 05 A(208)	22-14-2054	A-4455-BH 05 D(P909)	22-17-2052	A-4455-BH 05 D(565)	22-17-3052	A-4455-BH 05 D(208)
6	22-16-2060	A-4455-AZ 06 A(208)	22-14-2064	A-4455-BH 06 D(P909)	22-17-2062	A-4455-BH 06 D(565)	22-17-3062	A-4455-BH 06 D(208)
7	22-16-2070	A-4455-AZ 07 A(208)	22-14-2074	A-4455-BH 07 D(P909)	22-17-2072	A-4455-BH 07 D(565)	22-17-3072	A-4455-BH 07 D(208)
8	22-16-2080	A-4455-AZ 08 A(208)	22-14-2084	A-4455-BH 08 D(P909)	22-17-2082	A-4455-BH 08 D(565)	22-17-3082	A-4455-BH 08 D(208)
9	22-16-2090	A-4455-AZ 09 A(208)	22-14-2094	A-4455-BH 09 D(P909)	22-17-2092	A-4455-BH 09 D(565)	22-17-3092	A-4455-BH 09 D(208)
10	22-16-2100	A-4455-AZ 10 A(208)	22-14-2104	A-4455-BH 10 D(P909)	22-17-2102	A-4455-BH 10 D(565)	22-17-3102	A-4455-BH 10 D(208)
11	22-16-2110	A-4455-AZ 11 A(208)	22-14-2114	A-4455-BH 11 D(P909)	22-17-2112	A-4455-BH 11 D(565)	22-17-3112	A-4455-BH 11 D(208)
12	22-16-2120	A-4455-AZ 12 A(208)	22-14-2124	A-4455-BH 12 D(P909)	22-17-2122	A-4455-BH 12 D(565)	22-17-3122	A-4455-BH 12 D(208)
13	22-16-2130	A-4455-AZ 13 A(208)	22-14-2134	A-4455-BH 13 D(P909)	22-17-2132	A-4455-BH 13 D(565)	22-17-3132	A-4455-BH 13 D(208)
14	22-16-2140	A-4455-AZ 14 A(208)	22-14-2144	A-4455-BH 14 D(P909)	22-17-2142	A-4455-BH 14 D(565)	22-17-3142	A-4455-BH 14 D(208)
15	22-16-2150	A-4455-AZ 15 A(208)	22-14-2154	A-4455-BH 15 D(P909)	22-17-2152	A-4455-BH 15 D(565)	22-17-3152	A-4455-BH 15 D(208)
16	22-16-2160	A-4455-AZ 16 A(208)	22-14-2164	A-4455-BH 16 D(P909)	22-17-2162	A-4455-BH 16 D(565)	22-17-3162	A-4455-BH 16 D(208)
17	22-16-2170	A-4455-AZ 17 A(208)	22-14-2174	A-4455-BH 17 D(P909)	22-17-2172	A-4455-BH 17 D(565)	22-17-3172	A-4455-BH 17 D(208)
18	22-16-2180	A-4455-AZ 18 A(208)	22-14-2184	A-4455-BH 18 D(P909)	22-17-2182	A-4455-BH 18 D(565)	22-17-3182	A-4455-BH 18 D(208)
19	22-16-2190	A-4455-AZ 19 A(208)	22-14-2194	A-4455-BH 19 D(P909)	22-17-2192	A-4455-BH 19 D(565)	22-17-3192	A-4455-BH 19 D(208)
20	22-16-2200	A-4455-AZ 20 A(208)	22-14-2204	A-4455-BH 20 D(P909)	22-17-2202	A-4455-BH 20 D(565)	22-17-3202	A-4455-BH 20 D(208)
21	22-16-2210	A-4455-AZ 21 A(208)	22-14-2214	A-4455-BH 21 D(P909)	22-17-2212	A-4455-BH 21 D(565)	22-17-3212	A-4455-BH 21 D(208)
22	22-16-2220	A-4455-AZ 22 A(208)	22-14-2224	A-4455-BH 22 D(P909)	22-17-2222	A-4455-BH 22 D(565)	22-17-3222	A-4455-BH 22 D(208)
23	22-16-2230	A-4455-AZ 23 A(208)	22-14-2234	A-4455-BH 23 D(P909)	22-17-2232	A-4455-BH 23 D(565)	22-17-3232	A-4455-BH 23 D(208)
24	22-16-2240	A-4455-AZ 24 A(208)	22-14-2244	A-4455-BH 24 D(P909)	22-17-2242	A-4455-BH 24 D(565)	22-17-3242	A-4455-BH 24 D(208)
25	22-16-2250	A-4455-AZ 25 A(208)	22-14-2254	A-4455-BH 25 D(P909)	22-17-2252	A-4455-BH 25 D(565)	22-17-3252	A-4455-BH 25 D(208)

REV:	ECR/ECN INFORMATION:	TITLE:	SHEET No.
D5	EC No.: UCP2008-1384	KK 100 PCB ASSY 4455 SERIES DWG	- 3 -
	DATE: 12/21/2007		
DOCUMENT NUMBER:	CREATED / REVISED BY:	CHECKED BY:	APPROVED BY:
SDA-4455	ADERR	AELHAG	FSMITH



KK 100 PCB ASSY 2-25 CKT

4455 SERIES

STANDARD PRODUCT

Assy Proc:	TOP ENTRY
Hooks Cut:	NO
Housing No:	4455-N
Terminal No:	4316-4(P909)
Dim C:	3.35 / .132
Plating:	P909
Packaging:	PK-44646-001
Voids:	NONE

Assy Proc:	TOP ENTRY
Hooks Cut:	NO
Housing No:	4455-N
Terminal No:	4316-4(565)
Dim C:	3.35 / .132
Plating:	565
Packaging:	PK-44646-001
Voids:	NONE

Assy Proc:	TOP ENTRY
Hooks Cut:	NO
Housing No:	4455-N
Terminal No:	4316-4(208)
Dim C:	3.35 / .132
Plating:	208
Packaging:	PK-44646-001
Voids:	NONE

Ckts	Material No	Engineer Number
2	22-02-2025	A-4455-CZ02A(P909)
3	22-02-2035	A-4455-CZ 03A(P909)
4	22-02-2045	A-4455-CZ 04A(P909)
5	22-02-2055	A-4455-CZ 05A(P909)
6	22-02-2065	A-4455-CZ 06A(P909)
7	22-02-2075	A-4455-CZ 07A(P909)
8	22-02-2085	A-4455-CZ 08 A(P909)
9	22-02-2095	A-4455-CZ 09 A(P909)
10	22-02-2105	A-4455-CZ 10 A(P909)
11	22-02-2115	A-4455-CZ 11 A(P909)
12	22-02-2125	A-4455-CZ 12 A(P909)
13	22-02-2135	A-4455-CZ 13 A(P909)
14	22-02-2145	A-4455-CZ 14 A(P909)
15	22-02-2155	A-4455-CZ 15 A(P909)
16	22-02-2165	A-4455-CZ 16 A(P909)
17	22-02-2175	A-4455-CZ 17 A(P909)
18	22-02-2185	A-4455-CZ 18 A(P909)
19	22-02-2195	A-4455-CZ 19 A(P909)
20	22-02-2205	A-4455-CZ 20 A(P909)
21	22-02-2215	A-4455-CZ 21 A(P909)
22	22-02-2225	A-4455-CZ 22 A(P909)
23	22-02-2235	A-4455-CZ 23 A(P909)
24	22-02-2245	A-4455-CZ 24 A(P909)
25	22-02-2255	A-4455-CZ 25 A(P909)

Material No	Engineer Number
22-18-2023	A-4455-CZ02A(565)
22-18-2033	A-4455-CZ 03 A(565)
22-18-2043	A-4455-CZ 04 A(565)
22-18-2053	A-4455-CZ 05 A(565)
22-18-2063	A-4455-CZ 06 A(565)
22-18-2073	A-4455-CZ 07 A(565)
22-18-2083	A-4455-CZ 08 A(565)
22-18-2093	A-4455-CZ 09 A(565)
22-18-2103	A-4455-CZ 10 A(565)
22-18-2113	A-4455-CZ 11 A(565)
22-18-2123	A-4455-CZ 12 A(565)
22-18-2133	A-4455-CZ 13 A(565)
22-18-2143	A-4455-CZ 14 A(565)
22-18-2153	A-4455-CZ 15 A(565)
22-18-2163	A-4455-CZ 16 A(565)
22-18-2173	A-4455-CZ 17 A(565)
22-18-2183	A-4455-CZ 18 A(565)
22-18-2193	A-4455-CZ 19 A(565)
22-18-2203	A-4455-CZ 20 A(565)
22-18-2213	A-4455-CZ 21 A(565)
22-18-2223	A-4455-CZ 22 A(565)
22-18-2233	A-4455-CZ 23 A(565)
22-18-2243	A-4455-CZ 24 A(565)
22-18-2253	A-4455-CZ 25 A(565)

Material No	Engineer Number
22-18-2021	A-4455-CZ02A(208)
22-18-2031	A-4455-CZ 03 A(208)
22-18-2041	A-4455-CZ 04 A(208)
22-18-2051	A-4455-CZ 05 A(208)
22-18-2061	A-4455-CZ 06 A(208)
22-18-2071	A-4455-CZ 07 A(208)
22-18-2081	A-4455-CZ 08 A(208)
22-18-2091	A-4455-CZ 09 A(208)
22-18-2101	A-4455-CZ 10 A(208)
22-18-2111	A-4455-CZ 11 A(208)
22-18-2121	A-4455-CZ 12 A(208)
22-18-2131	A-4455-CZ 13 A(208)
22-18-2141	A-4455-CZ 14 A(208)
22-18-2151	A-4455-CZ 15 A(208)
22-18-2161	A-4455-CZ 16 A(208)
22-18-2171	A-4455-CZ 17 A(208)
22-18-2181	A-4455-CZ 18 A(208)
22-18-2191	A-4455-CZ 19 A(208)
22-18-2201	A-4455-CZ 20 A(208)
22-18-2211	A-4455-CZ 21 A(208)
22-18-2221	A-4455-CZ 22 A(208)
22-18-2231	A-4455-CZ 23 A(208)
22-18-2241	A-4455-CZ 24 A(208)
22-18-2251	A-4455-CZ 25 A(208)

REV: D5	ECR/ECN INFORMATION: EC No.: UCP2008-1384 DATE: 12/21/2007	TITLE: <h2 style="text-align: center;">KK 100 PCB ASSY 4455 SERIES DWG</h2>	SHEET No. <h3 style="text-align: center;">- 4 -</h3>	
DOCUMENT NUMBER: SDA-4455		CREATED / REVISED BY: ADERR	CHECKED BY: AELHAG	APPROVED BY: FSMITH



KK 100 PCB ASSY 2-25 CKT

4455 SERIES

Ckts	Assy Proc: RIGHT ANGLE		Assy Proc: RIGHT ANGLE		Assy Proc: RIGHT ANGLE		Assy Proc: BOTTOM ENTRY	
	Hooks Cut:	NO	Hooks Cut:	NO	Hooks Cut:	NO	Hooks Cut:	NO
	Housing No:	4455-N	Housing No:	4455-N	Housing No:	4455-N	Housing No:	4455-N2
	Terminal No:	6516-4(P909)	Terminal No:	6516-4(565)	Terminal No:	6516-4(208)	Terminal No:	6516-3B(122)
	Dim C:	3.35 / .132	Dim C:	3.35 / .132	Dim C:	3.35 / .132	Dim C:	3.35 / .132
	Plating:	P909	Plating:	565	Plating:	208	Plating:	122
	Packaging:	PK-44646-001	Packaging:	PK-44646-001	Packaging:	PK-44646-001	Packaging:	PK-44646-001
	Voids:	NONE	Voids:	NONE	Voids:	NONE	Voids:	NONE
	Material No	Engineer Number	Material No	Engineer Number	Material No	Engineer Number	Material No	Engineer Number
2	22-15-4025	A-4455-AZ02B(P909)	22-16-2024	A-4455-AZ02B(565)		A-4455-AZ02B(208)	22-14-2022	A-4455-BH02J(122)
3	22-15-4035	A-4455-AZ 03 B(P909)	22-16-2034	A-4455-AZ 03 B(565)		A-4455-AZ 03 B(208)	22-14-2032	A-4455-BH 03 J(122)
4	22-15-4045	A-4455-AZ 04 B(P909)	22-16-2044	A-4455-AZ 04 B(565)		A-4455-AZ 04 B(208)	22-14-2042	A-4455-BH 04 J(122)
5	22-15-4055	A-4455-AZ 05 B(P909)	22-16-2054	A-4455-AZ 05 B(565)		A-4455-AZ 05 B(208)	22-14-2052	A-4455-BH 05 J(122)
6	22-15-4065	A-4455-AZ 06 B(P909)	22-16-2064	A-4455-AZ 06 B(565)		A-4455-AZ 06 B(208)	22-14-2062	A-4455-BH 06 J(122)
7	22-15-4075	A-4455-AZ 07 B(P909)	22-16-2074	A-4455-AZ 07 B(565)		A-4455-AZ 07 B(208)	22-14-2072	A-4455-BH 07 J(122)
8	22-15-4085	A-4455-AZ 08 B(P909)	22-16-2084	A-4455-AZ 08 B(565)		A-4455-AZ 08 B(208)	22-14-2082	A-4455-BH 08 J(122)
9	22-15-4095	A-4455-AZ 09 B(P909)	22-16-2094	A-4455-AZ 09 B(565)		A-4455-AZ 09 B(208)	22-14-2092	A-4455-BH 09 J(122)
10	22-15-4105	A-4455-AZ 10 B(P909)	22-16-2104	A-4455-AZ 10 B(565)		A-4455-AZ 10 B(208)	22-14-2102	A-4455-BH 10 J(122)
11	22-15-4115	A-4455-AZ 11 B(P909)	22-16-2114	A-4455-AZ 11 B(565)		A-4455-AZ 11 B(208)	22-14-2112	A-4455-BH 11 J(122)
12	22-15-4125	A-4455-AZ 12 B(P909)	22-16-2124	A-4455-AZ 12 B(565)		A-4455-AZ 12 B(208)	22-14-2122	A-4455-BH 12 J(122)
13	22-15-4135	A-4455-AZ 13 B(P909)	22-16-2134	A-4455-AZ 13 B(565)		A-4455-AZ 13 B(208)	22-14-2132	A-4455-BH 13 J(122)
14	22-15-4145	A-4455-AZ 14 B(P909)	22-16-2144	A-4455-AZ 14 B(565)		A-4455-AZ 14 B(208)	22-14-2142	A-4455-BH 14 J(122)
15	22-15-4155	A-4455-AZ 15 B(P909)	22-16-2154	A-4455-AZ 15 B(565)		A-4455-AZ 15 B(208)	22-14-2152	A-4455-BH 15 J(122)
16	22-15-4165	A-4455-AZ 16 B(P909)	22-16-2164	A-4455-AZ 16 B(565)		A-4455-AZ 16 B(208)	22-14-2162	A-4455-BH 16 J(122)
17	22-15-4175	A-4455-AZ 17 B(P909)	22-16-2174	A-4455-AZ 17 B(565)		A-4455-AZ 17 B(208)	22-14-2172	A-4455-BH 17 J(122)
18	22-15-4185	A-4455-AZ 18 B(P909)	22-16-2184	A-4455-AZ 18 B(565)		A-4455-AZ 18 B(208)	22-14-2182	A-4455-BH 18 J(122)
19	22-15-4195	A-4455-AZ 19 B(P909)	22-16-2194	A-4455-AZ 19 B(565)		A-4455-AZ 19 B(208)	22-14-2192	A-4455-BH 19 J(122)
20	22-15-4205	A-4455-AZ 20 B(P909)	22-16-2204	A-4455-AZ 20 B(565)		A-4455-AZ 20 B(208)	22-14-2202	A-4455-BH 20 J(122)
21	22-15-4215	A-4455-AZ 21 B(P909)	22-16-2214	A-4455-AZ 21 B(565)		A-4455-AZ 21 B(208)	22-14-2212	A-4455-BH 21 J(122)
22	22-15-4225	A-4455-AZ 22 B(P909)	22-16-2224	A-4455-AZ 22 B(565)		A-4455-AZ 22 B(208)	22-14-2222	A-4455-BH 22 J(122)
23	22-15-4235	A-4455-AZ 23 B(P909)	22-16-2234	A-4455-AZ 23 B(565)		A-4455-AZ 23 B(208)	22-14-2232	A-4455-BH 23 J(122)
24	22-15-4245	A-4455-AZ 24 B(P909)	22-16-2244	A-4455-AZ 24 B(565)		A-4455-AZ 24 B(208)	22-14-2242	A-4455-BH 24 J(122)
25	22-15-4255	A-4455-AZ 25 B(P909)	22-16-2254	A-4455-AZ 25 B(565)		A-4455-AZ 25 B(208)	22-14-2252	A-4455-BH 25 J(122)

REV:	ECR/ECN INFORMATION:	TITLE:	
D5	EC No.: UCP2008-1384	KK 100 PCB ASSY 4455 SERIES DWG	<u>SHEET No.</u>
	DATE: 12/21/2007		- 5 -
<u>DOCUMENT NUMBER:</u>		<u>CREATED / REVISED BY:</u>	<u>CHECKED BY:</u>
SDA-4455		ADERR	AELHAG
		<u>APPROVED BY:</u>	
		FSMITH	



KK 100 PCB ASSY 2-25 CKT

4455 SERIES

Assy Proc:	BOTTOM ENTRY
Hooks Cut:	NO
Housing No:	4455-N2
Terminal No:	6516-3B(565)
Dim C:	3.35 / .132
Plating:	565
Packaging:	PK-44646-001
Voids:	NONE

Assy Proc:	BOTTOM ENTRY
Hooks Cut:	NO
Housing No:	4455-N2
Terminal No:	6516-3B(208)
Dim C:	3.35 / .132
Plating:	208
Packaging:	PK-44646-001
Voids:	NONE

Assy Proc:	TOP ENTRY
Hooks Cut:	NO
Housing No:	4455-N
Terminal No:	6516-4(P909)
Dim C:	3.35 / .132
Plating:	P909
Packaging:	PK-44646-001
Voids:	NONE

Assy Proc:	TOP ENTRY
Hooks Cut:	NO
Housing No:	4455-N
Terminal No:	6516-4(565)
Dim C:	3.35 / .132
Plating:	565
Packaging:	PK-44646-001
Voids:	NONE

Ckts	Material No	Engineer Number	Material No	Engineer Number	Material No	Engineer Number	Material No	Engineer Number
2	22-17-2021	A-4455-BH02J(565)		A-4455-BH02J(208)		A-4455-CZ02B(P909)	22-18-2022	A-4455-CZ02B(565)
3	22-17-2031	A-4455-BH 03 J(565)		A-4455-BH 03 J(208)		A-4455-CZ 03 B(P909)	22-18-2032	A-4455-CZ 03 B(565)
4	22-17-2041	A-4455-BH 04 J(565)		A-4455-BH 04 J(208)		A-4455-CZ 04 B(P909)	22-18-2042	A-4455-CZ 04 B(565)
5	22-17-2051	A-4455-BH 05 J(565)		A-4455-BH 05 J(208)		A-4455-CZ 05 B(P909)	22-18-2052	A-4455-CZ 05 B(565)
6	22-17-2061	A-4455-BH 06 J(565)		A-4455-BH 06 J(208)		A-4455-CZ 06 B(P909)	22-18-2062	A-4455-CZ 06 B(565)
7	22-17-2071	A-4455-BH 07 J(565)		A-4455-BH 07 J(208)		A-4455-CZ 07 B(P909)	22-18-2072	A-4455-CZ 07 B(565)
8	22-17-2081	A-4455-BH 08 J(565)		A-4455-BH 08 J(208)		A-4455-CZ 08 B(P909)	22-18-2082	A-4455-CZ 08 B(565)
9	22-17-2091	A-4455-BH 09 J(565)		A-4455-BH 09 J(208)		A-4455-CZ 09 B(P909)	22-18-2092	A-4455-CZ 09 B(565)
10	22-17-2101	A-4455-BH 10 J(565)		A-4455-BH 10 J(208)		A-4455-CZ 10 B(P909)	22-18-2102	A-4455-CZ 10 B(565)
11	22-17-2111	A-4455-BH 11 J(565)		A-4455-BH 11 J(208)		A-4455-CZ 11 B(P909)	22-18-2112	A-4455-CZ 11 B(565)
12	22-17-2121	A-4455-BH 12 J(565)		A-4455-BH 12 J(208)		A-4455-CZ 12 B(P909)	22-18-2122	A-4455-CZ 12 B(565)
13	22-17-2131	A-4455-BH 13 J(565)		A-4455-BH 13 J(208)		A-4455-CZ 13 B(P909)	22-18-2132	A-4455-CZ 13 B(565)
14	22-17-2141	A-4455-BH 14 J(565)		A-4455-BH 14 J(208)		A-4455-CZ 14 B(P909)	22-18-2142	A-4455-CZ 14 B(565)
15	22-17-2151	A-4455-BH 15 J(565)		A-4455-BH 15 J(208)		A-4455-CZ 15 B(P909)	22-18-2152	A-4455-CZ 15 B(565)
16	22-17-2161	A-4455-BH 16 J(565)		A-4455-BH 16 J(208)		A-4455-CZ 16 B(P909)	22-18-2162	A-4455-CZ 16 B(565)
17	22-17-2171	A-4455-BH 17 J(565)		A-4455-BH 17 J(208)		A-4455-CZ 17 B(P909)	22-18-2172	A-4455-CZ 17 B(565)
18	22-17-2181	A-4455-BH 18 J(565)		A-4455-BH 18 J(208)		A-4455-CZ 18 B(P909)	22-18-2182	A-4455-CZ 18 B(565)
19	22-17-2191	A-4455-BH 19 J(565)		A-4455-BH 19 J(208)		A-4455-CZ 19 B(P909)	22-18-2192	A-4455-CZ 19 B(565)
20	22-17-2201	A-4455-BH 20 J(565)		A-4455-BH 20 J(208)		A-4455-CZ 20 B(P909)	22-18-2202	A-4455-CZ 20 B(565)
21	22-17-2211	A-4455-BH 21 J(565)		A-4455-BH 21 J(208)		A-4455-CZ 21 B(P909)	22-18-2212	A-4455-CZ 21 B(565)
22	22-17-2221	A-4455-BH 22 J(565)		A-4455-BH 22 J(208)		A-4455-CZ 22 B(P909)	22-18-2222	A-4455-CZ 22 B(565)
23	22-17-2231	A-4455-BH 23 J(565)		A-4455-BH 23 J(208)		A-4455-CZ 23 B(P909)	22-18-2232	A-4455-CZ 23 B(565)
24	22-17-2241	A-4455-BH 24 J(565)		A-4455-BH 24 J(208)		A-4455-CZ 24 B(P909)	22-18-2242	A-4455-CZ 24 B(565)
25	22-17-2251	A-4455-BH 25 J(565)		A-4455-BH 25 J(208)		A-4455-CZ 25 B(P909)	22-18-2252	A-4455-CZ 25 B(565)

REV: D5	ECR/ECN INFORMATION:		TITLE: KK 100 PCB ASSY 4455 SERIES DWG	SHEET No. - 6 -
	EC No.:	UCP2008-1384		
	DATE:	12/21/2007		
DOCUMENT NUMBER: SDA-4455		CREATED / REVISED BY: ADERR	CHECKED BY: AELHAG	APPROVED BY: FSMITH



KK 100 PCB ASSY 2-25 CKT

4455 SERIES

Ckts	Assy Proc: TOP ENTRY		Assy Proc: RIGHT ANGLE		Assy Proc: RIGHT ANGLE		Assy Proc: RIGHT ANGLE	
	Material No	Engineer Number	Material No	Engineer Number	Material No	Engineer Number	Material No	Engineer Number
2		A-4455-CZ02B(208)						
3		A-4455-CZ 03B(208)						
4		A-4455-CZ 04 B(208)						
5		A-4455-CZ 05 B(208)						
6		A-4455-CZ 06 B(208)						
7		A-4455-CZ 07 B(208)	22-15-2075	A-4455-AA07A(P909)	22-16-2076	A-4455-AA07A(208)	50-34-8518	A-4455-AB 06 A(228)
8		A-4455-CZ 08 B(208)	22-15-2085	A-4455-AA 08 A(P909)	22-16-2086	A-4455-AA 08 A(208)		A-4455-AB 07 A(228)
9		A-4455-CZ 09 B(208)	22-15-2095	A-4455-AA 09 A(P909)	22-16-2096	A-4455-AA 09 A(208)		A-4455-AB 08 A(228)
10		A-4455-CZ 10 B(208)	22-15-2105	A-4455-AA 10 A(P909)	22-16-2106	A-4455-AA 10 A(208)		A-4455-AB 09 A(228)
11		A-4455-CZ 11 B(208)	22-15-2115	A-4455-AA 11 A(P909)	22-16-2116	A-4455-AA 11 A(208)		A-4455-AB 10 A(228)
12		A-4455-CZ 12 B(208)	22-15-2125	A-4455-AA 12 A(P909)	22-16-2126	A-4455-AA 12 A(208)		A-4455-AB 11 A(228)
13		A-4455-CZ 13 B(208)	22-15-2135	A-4455-AA 13 A(P909)	22-16-2136	A-4455-AA 13 A(208)		A-4455-AB 12 A(228)
14		A-4455-CZ 14 B(208)	22-15-2145	A-4455-AA 14 A(P909)	22-16-2146	A-4455-AA 14 A(208)		A-4455-AB 13 A(228)
15		A-4455-CZ 15 B(208)	22-15-2155	A-4455-AA 15 A(P909)	22-16-2156	A-4455-AA 15 A(208)		A-4455-AB 14 A(228)
16		A-4455-CZ 16 B(208)	22-15-2165	A-4455-AA 16 A(P909)	22-16-2166	A-4455-AA 16 A(208)		A-4455-AB 15 A(228)
17		A-4455-CZ 17 B(208)	22-15-2175	A-4455-AA 17 A(P909)	22-16-2176	A-4455-AA 17 A(208)		A-4455-AB 16 A(228)
18		A-4455-CZ 18 B(208)	22-15-2185	A-4455-AA 18 A(P909)	22-16-2186	A-4455-AA 18 A(208)		A-4455-AB 17 A(228)
19		A-4455-CZ 19 B(208)	22-15-2195	A-4455-AA 19 A(P909)	22-16-2196	A-4455-AA 19 A(208)		A-4455-AB 18 A(228)
20		A-4455-CZ 20 B(208)	22-15-2205	A-4455-AA 20 A(P909)	22-16-2206	A-4455-AA 20 A(208)		A-4455-AB 19 A(228)
21		A-4455-CZ 21 B(208)	22-15-2215	A-4455-AA 21 A(P909)	22-16-2216	A-4455-AA 21 A(208)		A-4455-AB 20 A(228)
22		A-4455-CZ 22 B(208)	22-15-2225	A-4455-AA 22 A(P909)	22-16-2226	A-4455-AA 22 A(208)		A-4455-AB 21 A(228)
23		A-4455-CZ 23 B(208)	22-15-2235	A-4455-AA 23 A(P909)	22-16-2236	A-4455-AA 23 A(208)		A-4455-AB 22 A(228)
24		A-4455-CZ 24 B(208)	22-15-2245	A-4455-AA 24 A(P909)	22-16-2246	A-4455-AA 24 A(208)	22-17-3240	A-4455-AB 23 A(228)
25		A-4455-CZ 25 B(208)	22-15-2255	A-4455-AA 25 A(P909)	22-16-2256	A-4455-AA 25 A(208)		A-4455-AB 24 A(228)
								A-4455-AB 25 A(228)

REV:	ECR/ECN INFORMATION:	<u>TITLE:</u>	KK 100 PCB ASSY 4455 SERIES DWG	<u>SHEET No.</u>
D5	EC No.: UCP2008-1384			- 7 -
	DATE: 12/21/2007			
<u>DOCUMENT NUMBER:</u>		<u>CREATED / REVISED BY:</u>	<u>CHECKED BY:</u>	<u>APPROVED BY:</u>
SDA-4455		ADERR	AELHAG	FSMITH



KK 100 PCB ASSY 2-25 CKT

4455 SERIES

Ckts	Assy Proc: RIGHT ANGLE		Assy Proc: RIGHT ANGLE		Assy Proc: RIGHT ANGLE		Assy Proc: RIGHT ANGLE	
	Material No	Engineer Number	Material No	Engineer Number	Material No	Engineer Number	Material No	Engineer Number
	Hooks Cut:	NO	Hooks Cut:	NO	Hooks Cut:	NO	Hooks Cut:	NO
	Housing No:	4455-BN	Housing No:	4455-NHH	Housing No:	4455-NR	Housing No:	4455-N
	Terminal No:	4316-4(P909)	Terminal No:	4316-4(P909)	Terminal No:	4316-4(P909)	Terminal No:	4316-4(122)
	Dim C:	3.35 / .132	Dim C:	3.35 / .132	Dim C:	3.35 / .132	Dim C:	3.35 / .132
	Plating:	P909	Plating:	P909	Plating:	P909	Plating:	122
	Packaging:	PK-44646-001	Packaging:	PK-44646-001	Packaging:	PK-44646-001	Packaging:	PK-44646-001
	Voids:	NONE	Voids:	NONE	Voids:	NONE	Voids:	NONE
2	22-15-4024	A-4455-AB02A(P909)	22-15-2022	A-4455-AE02A(P909)	22-15-4022	A-4455-AR02A(P909)	22-26-2021	A-4455-AZ02A(122)
3	22-15-4034	A-4455-AB 03 A(P909)	22-15-2032	A-4455-AE 03 A(P909)	22-15-4032	A-4455-AR 03 A(P909)	22-26-2031	A-4455-AZ 03 A(122)
4	22-15-4044	A-4455-AB 04 A(P909)	22-15-2042	A-4455-AE 04 A(P909)	22-15-4042	A-4455-AR 04 A(P909)	22-26-2041	A-4455-AZ 04 A(122)
5	22-15-4054	A-4455-AB 05 A(P909)	22-15-2052	A-4455-AE 05 A(P909)	22-15-4052	A-4455-AR 05 A(P909)	22-26-2051	A-4455-AZ 05 A(122)
6	22-15-4064	A-4455-AB 06 A(P909)	22-15-2062	A-4455-AE 06 A(P909)	22-15-4062	A-4455-AR 06 A(P909)	22-26-2061	A-4455-AZ 06 A(122)
7	22-15-4074	A-4455-AB 07 A(P909)	22-15-2072	A-4455-AE 07 A(P909)	22-15-4072	A-4455-AR 07 A(P909)	22-26-2071	A-4455-AZ 07 A(122)
8	22-15-4084	A-4455-AB 08 A(P909)	22-15-2082	A-4455-AE 08 A(P909)	22-15-4082	A-4455-AR 08 A(P909)	22-26-2081	A-4455-AZ 08 A(122)
9	22-15-4094	A-4455-AB 09 A(P909)	22-15-2092	A-4455-AE 09 A(P909)	22-15-4092	A-4455-AR 09 A(P909)	22-26-2091	A-4455-AZ 09 A(122)
10	22-15-4104	A-4455-AB 10 A(P909)	22-15-2102	A-4455-AE 10 A(P909)	22-15-4102	A-4455-AR 10 A(P909)	22-26-2101	A-4455-AZ 10 A(122)
11	22-15-4114	A-4455-AB 11 A(P909)	22-15-2112	A-4455-AE 11 A(P909)	22-15-4112	A-4455-AR 11 A(P909)	22-26-2111	A-4455-AZ 11 A(122)
12	22-15-4124	A-4455-AB 12 A(P909)	22-15-2122	A-4455-AE 12 A(P909)	22-15-4122	A-4455-AR 12 A(P909)	22-26-2121	A-4455-AZ 12 A(122)
13	22-15-4134	A-4455-AB 13 A(P909)	22-15-2132	A-4455-AE 13 A(P909)	22-15-4132	A-4455-AR 13 A(P909)	22-26-2131	A-4455-AZ 13 A(122)
14	22-15-4144	A-4455-AB 14 A(P909)	22-15-2142	A-4455-AE 14 A(P909)	22-15-4142	A-4455-AR 14 A(P909)	22-26-2141	A-4455-AZ 14 A(122)
15	22-15-4154	A-4455-AB 15 A(P909)	22-15-2152	A-4455-AE 15 A(P909)	22-15-4152	A-4455-AR 15 A(P909)	22-26-2151	A-4455-AZ 15 A(122)
16	22-15-4164	A-4455-AB 16 A(P909)	22-15-2162	A-4455-AE 16 A(P909)	22-15-4162	A-4455-AR 16 A(P909)	22-26-2161	A-4455-AZ 16 A(122)
17	22-15-4174	A-4455-AB 17 A(P909)	22-15-2172	A-4455-AE 17 A(P909)	22-15-4172	A-4455-AR 17 A(P909)	22-26-2171	A-4455-AZ 17 A(122)
18	22-15-4184	A-4455-AB 18 A(P909)	22-15-2182	A-4455-AE 18 A(P909)	22-15-4182	A-4455-AR 18 A(P909)	22-26-2181	A-4455-AZ 18 A(122)
19	22-15-4194	A-4455-AB 19 A(P909)	22-15-2192	A-4455-AE 19 A(P909)	22-15-4192	A-4455-AR 19 A(P909)	22-26-2191	A-4455-AZ 19 A(122)
20	22-15-4204	A-4455-AB 20 A(P909)	22-15-2202	A-4455-AE 20 A(P909)	22-15-4202	A-4455-AR 20 A(P909)	22-26-2201	A-4455-AZ 20 A(122)
21	22-15-4214	A-4455-AB 21 A(P909)	22-15-2212	A-4455-AE 21 A(P909)	22-15-4212	A-4455-AR 21 A(P909)	22-26-2211	A-4455-AZ 21 A(122)
22	22-15-4224	A-4455-AB 22 A(P909)	22-15-2222	A-4455-AE 22 A(P909)	22-15-4222	A-4455-AR 22 A(P909)	22-26-2221	A-4455-AZ 22 A(122)
23	22-15-4234	A-4455-AB 23 A(P909)	22-15-2232	A-4455-AE 23 A(P909)	22-15-4232	A-4455-AR 23 A(P909)	22-26-2231	A-4455-AZ 23 A(122)
24	22-15-4244	A-4455-AB 24 A(P909)	22-15-2242	A-4455-AE 24 A(P909)	22-15-4242	A-4455-AR 24 A(P909)	22-26-2241	A-4455-AZ 24 A(122)
25	22-15-4254	A-4455-AB 25 A(P909)	22-15-2252	A-4455-AE 25 A(P909)	22-15-4252	A-4455-AR 25 A(P909)	22-26-2251	A-4455-AZ 25 A(122)

REV: D5	ECR/ECN INFORMATION: EC No.: UCP2008-1384 DATE: 12/21/2007	TITLE:	KK 100 PCB ASSY 4455 SERIES DWG	SHEET No. - 8 -
DOCUMENT NUMBER: SDA-4455		CREATED / REVISED BY: ADERR	CHECKED BY: AELHAG	APPROVED BY: FSMITH



KK 100 PCB ASSY 2-25 CKT

4455 SERIES

Ckts	Assy Proc: RIGHT ANGLE		Assy Proc: RIGHT ANGLE		Assy Proc: RIGHT ANGLE		Assy Proc: RIGHT ANGLE	
	Material No	Engineer Number	Material No	Engineer Number	Material No	Engineer Number	Material No	Engineer Number
	Hooks Cut:	NO	Hooks Cut:	NO	Hooks Cut:	NO	Hooks Cut:	NO
	Housing No:	4455-N	Housing No:	4455-N	Housing No:	4455-N	Housing No:	4455-N
	Terminal No:	4316-4(228)	Terminal No:	6516-4(228)	Terminal No:	6516-4(228)	Terminal No:	6516-4A(122)
	Dim C:	3.35 / .132	Dim C:	3.35 / .132	Dim C:	3.35 / .132	Dim C:	3.35 / .132
	Plating:	228	Plating:	228	Plating:	228	Plating:	122
	Packaging:	PK-44646-001	Packaging:	PK-44646-001	Packaging:	PK-44646-001	Packaging:	PK-44646-001
	Voids:	NONE	Voids:	NONE	Voids:	NONE	Voids:	NONE
2		A-4455-AZ02A(228)	22-17-5023	A-4455-AZ02B(228)	22-16-2022	A-4455-AZ02B(228)	22-65-3021	A-4455-AZ02M(122)
3		A-4455-AZ 03 A(228)	22-17-5033	A-4455-AZ 03 B(228)	22-16-2032	A-4455-AZ 03 B(228)	22-65-3031	A-4455-AZ03M(122)
4		A-4455-AZ 04 A(228)	22-17-5043	A-4455-AZ 04 B(228)	22-16-2042	A-4455-AZ 04 B(228)	22-65-3041	A-4455-AZ04 M(122)
5		A-4455-AZ 05 A(228)	22-17-5053	A-4455-AZ 05 B(228)	22-16-2052	A-4455-AZ 05 B(228)	22-65-3051	A-4455-AZ05 M(122)
6		A-4455-AZ 06 A(228)	22-17-5063	A-4455-AZ 06 B(228)	22-16-2062	A-4455-AZ 06 B(228)	22-65-3061	A-4455-AZ06 M(122)
7		A-4455-AZ 07 A(228)	22-17-5073	A-4455-AZ 07 B(228)	22-16-2072	A-4455-AZ 07 B(228)	22-65-3071	A-4455-AZ07 M(122)
8		A-4455-AZ 08 A(228)	22-17-5083	A-4455-AZ 08 B(228)	22-16-2082	A-4455-AZ 08 B(228)	22-65-3081	A-4455-AZ08 M(122)
9		A-4455-AZ 09 A(228)	22-17-5093	A-4455-AZ 09 B(228)	22-16-2092	A-4455-AZ 09 B(228)	22-65-3091	A-4455-AZ09 M(122)
10		A-4455-AZ 10 A(228)	22-17-5103	A-4455-AZ 10 B(228)	22-16-2102	A-4455-AZ 10 B(228)	22-65-3101	A-4455-AZ10 M(122)
11		A-4455-AZ 11 A(228)	22-17-5113	A-4455-AZ 11 B(228)	22-16-2112	A-4455-AZ 11 B(228)	22-65-3111	A-4455-AZ11 M(122)
12		A-4455-AZ 12 A(228)	22-17-5123	A-4455-AZ 12 B(228)	22-16-2122	A-4455-AZ 12 B(228)	22-65-3121	A-4455-AZ12 M(122)
13		A-4455-AZ 13 A(228)	22-17-5133	A-4455-AZ 13 B(228)	22-16-2132	A-4455-AZ 13 B(228)	22-65-3131	A-4455-AZ13 M(122)
14		A-4455-AZ 14 A(228)	22-17-5143	A-4455-AZ 14 B(228)	22-16-2142	A-4455-AZ 14 B(228)	22-65-3141	A-4455-AZ14 M(122)
15		A-4455-AZ 15 A(228)	22-17-5153	A-4455-AZ 15 B(228)	22-16-2152	A-4455-AZ 15 B(228)	22-65-3151	A-4455-AZ15 M(122)
16		A-4455-AZ 16 A(228)	22-17-5163	A-4455-AZ 16 B(228)	22-16-2162	A-4455-AZ 16 B(228)	22-65-3161	A-4455-AZ16 M(122)
17		A-4455-AZ 17 A(228)	22-17-5173	A-4455-AZ 17 B(228)	22-16-2172	A-4455-AZ 17 B(228)	22-65-3171	A-4455-AZ17 M(122)
18		A-4455-AZ 18 A(228)	22-17-5183	A-4455-AZ 18 B(228)	22-16-2182	A-4455-AZ 18 B(228)	22-65-3181	A-4455-AZ18 M(122)
19		A-4455-AZ 19 A(228)	22-17-5193	A-4455-AZ 19 B(228)	22-16-2192	A-4455-AZ 19 B(228)	22-65-3191	A-4455-AZ19 M(122)
20	22-17-5201	A-4455-AZ 20 A(228)	22-17-5203	A-4455-AZ 20 B(228)	22-16-2202	A-4455-AZ 20 B(228)	22-65-3201	A-4455-AZ20 M(122)
21		A-4455-AZ 21 A(228)	22-17-5213	A-4455-AZ 21 B(228)	22-16-2212	A-4455-AZ 21 B(228)	22-65-3211	A-4455-AZ21 M(122)
22		A-4455-AZ 22 A(228)	22-17-5223	A-4455-AZ 22 B(228)	22-16-2222	A-4455-AZ 22 B(228)	22-65-3221	A-4455-AZ22 M(122)
23		A-4455-AZ 23 A(228)	22-17-5233	A-4455-AZ 23 B(228)	22-16-2232	A-4455-AZ 23 B(228)	22-65-3231	A-4455-AZ23 M(122)
24	22-17-3247	A-4455-AZ 24 A(228)	22-17-5243	A-4455-AZ 24 B(228)	22-16-2242	A-4455-AZ 24 B(228)	22-65-3241	A-4455-AZ24 M(122)
25		A-4455-AZ 25 A(228)	22-17-5253	A-4455-AZ 25 B(228)	22-16-2252	A-4455-AZ 25 B(228)	22-65-3251	A-4455-AZ25 M(122)

REV: D5	ECR/ECN INFORMATION: EC No.: UCP2008-1384 DATE: 12/21/2007	TITLE: KK 100 PCB ASSY 4455 SERIES DWG	SHEET No. - 9 -
DOCUMENT NUMBER: SDA-4455	CREATED / REVISED BY: ADERR	CHECKED BY: AELHAG	APPROVED BY: FSMITH



KK 100 PCB ASSY 2-25 CKT

4455 SERIES

	Assy Proc:	BOTTOM ENTRY	Assy Proc:	BOTTOM ENTRY	Assy Proc:	BOTTOM ENTRY	Assy Proc:	BOTTOM ENTRY
	Hooks Cut:	NO	Hooks Cut:	NO	Hooks Cut:	NO	Hooks Cut:	NO
	Housing No:	4455-N2	Housing No:	4455-N2	Housing No:	4455-N2	Housing No:	4455-N2
	Terminal No:	4316-3B(228)	Terminal No:	4316-3B(231)	Terminal No:	4316-3B(228)	Terminal No:	6516-3B(228)
	Dim C:	3.35 / .132	Dim C:	3.35 / .132	Dim C:	3.35 / .132	Dim C:	3.35 / .132
	Plating:	228	Plating:	231	Plating:	228	Plating:	228
	Packaging:	PK-44646-001	Packaging:	PK-44646-001	Packaging:	PK-44646-001	Packaging:	PK-44646-001
	Voids:	NO	Voids:	NO	Voids:	NO	Voids:	NO
Ckts	Material No	Engineer Number	Material No	Engineer Number	Material No	Engineer Number	Material No	Engineer Number
2	22-17-2024	A-4455-BH02D(228)		A-4455-BH02D(231)		A-4455-BH02D(228)	22-17-2027	A-4455-BH02J(228)
3	22-17-2034	A-4455-BH03D(228)		A-4455-BH 03 D(231)		A-4455-BH03D(228)	22-17-2037	A-4455-BH03J(228)
4	22-17-2044	A-4455-BH04D(228)		A-4455-BH 04 D(231)		A-4455-BH04D(228)	22-17-2047	A-4455-BH04J(228)
5	22-17-2054	A-4455-BH05D(228)		A-4455-BH 05 D(231)	22-17-3056	A-4455-BH05D(228)	22-17-2057	A-4455-BH05J(228)
6	22-17-2064	A-4455-BH06D(228)		A-4455-BH 06 D(231)	22-17-3066	A-4455-BH06D(228)	22-17-2067	A-4455-BH06J(228)
7	22-17-2074	A-4455-BH07D(228)		A-4455-BH 07 D(231)		A-4455-BH07D(228)	22-17-2077	A-4455-BH07J(228)
8	22-17-2084	A-4455-BH08D(228)		A-4455-BH 08 D(231)	22-17-3086	A-4455-BH08D(228)	22-17-2087	A-4455-BH08J(228)
9	22-17-2094	A-4455-BH09D(228)		A-4455-BH 09 D(231)		A-4455-BH09D(228)	22-17-2097	A-4455-BH09J(228)
10	22-17-2104	A-4455-BH10D(228)		A-4455-BH 10 D(231)		A-4455-BH10D(228)	22-17-2107	A-4455-BH10J(228)
11	22-17-2114	A-4455-BH11D(228)		A-4455-BH 11 D(231)		A-4455-BH11D(228)	22-17-2117	A-4455-BH11J(228)
12	22-17-2124	A-4455-BH12D(228)		A-4455-BH 12 D(231)		A-4455-BH12D(228)	22-17-2127	A-4455-BH12J(228)
13	22-17-2134	A-4455-BH13D(228)		A-4455-BH 13 D(231)		A-4455-BH13D(228)	22-17-2137	A-4455-BH13J(228)
14	22-17-2144	A-4455-BH14D(228)	22-17-2140	A-4455-BH 14 D(231)	22-17-3146	A-4455-BH14D(228)	22-17-2147	A-4455-BH14J(228)
15	22-17-2154	A-4455-BH15D(228)		A-4455-BH 15 D(231)		A-4455-BH15D(228)	22-17-2157	A-4455-BH15J(228)
16	22-17-2164	A-4455-BH16D(228)		A-4455-BH 16 D(231)		A-4455-BH16D(228)	22-17-2167	A-4455-BH16J(228)
17	22-17-2174	A-4455-BH17D(228)		A-4455-BH 17 D(231)		A-4455-BH17D(228)	22-17-2177	A-4455-BH17J(228)
18	22-17-2184	A-4455-BH18D(228)		A-4455-BH 18 D(231)		A-4455-BH18D(228)	22-17-2187	A-4455-BH18J(228)
19	22-17-2194	A-4455-BH19D(228)		A-4455-BH 19 D(231)	22-17-3196	A-4455-BH19D(228)	22-17-2197	A-4455-BH19J(228)
20	22-17-2204	A-4455-BH20D(228)	22-17-2200	A-4455-BH 20 D(231)	22-17-3206	A-4455-BH20D(228)	22-17-2207	A-4455-BH20J(228)
21	22-17-2214	A-4455-BH21D(228)		A-4455-BH 21 D(231)		A-4455-BH21D(228)	22-17-2217	A-4455-BH21J(228)
22	22-17-2224	A-4455-BH22D(228)		A-4455-BH 22 D(231)		A-4455-BH22D(228)	22-17-2227	A-4455-BH22J(228)
23	22-17-2234	A-4455-BH23D(228)		A-4455-BH 23 D(231)		A-4455-BH23D(228)	22-17-2237	A-4455-BH23J(228)
24	22-17-2244	A-4455-BH24D(228)		A-4455-BH 24 D(231)		A-4455-BH24D(228)	22-17-2247	A-4455-BH24J(228)
25	22-17-2254	A-4455-BH25D(228)	22-17-2250	A-4455-BH 25 D(231)	22-17-3256	A-4455-BH25D(228)	22-17-2257	A-4455-BH25J(228)

REV:	ECR/ECN INFORMATION:	TITLE:			SHEET No.
D5	EC No.: UCP2008-1384		KK 100 PCB ASSY		- 10 -
	DATE: 12/21/2007		4455 SERIES DWG		
DOCUMENT NUMBER:		CREATED / REVISED BY:		CHECKED BY:	
SDA-4455		ADERR		AELHAG	
				APPROVED BY:	
				FSMITH	



KK 100 PCB ASSY 2-25 CKT

4455 SERIES

	Assy Proc:	BOTTOM ENTRY	Assy Proc:	TOP ENTRY	Assy Proc:	TOP ENTRY	Assy Proc:	TOP ENTRY
	Hooks Cut:	NO	Hooks Cut:	YES	Hooks Cut:	YES	Hooks Cut:	YES
	Housing No:	4455-N2	Housing No:	4455-NR	Housing No:	4455-N	Housing No:	4455-N
	Terminal No:	6516-3C(122)	Terminal No:	4316-4(208)	Terminal No:	4316-4(565)	Terminal No:	4316-4(P909)
	Dim C:	3.35 / .132	Dim C:	3.35 / .132	Dim C:	3.35 / .132	Dim C:	3.35 / .132
	Plating:	122	Plating:	208	Plating:	565	Plating:	P909
	Packaging:	PK-44646-001	Packaging:	PK-44646-003	Packaging:	PK-44646-003	Packaging:	PK-44646-003
	Voids:	NO	Voids:	NO	Voids:	NO	Voids:	NO
Ckts	Material No	Engineer Number	Material No	Engineer Number	Material No	Engineer Number	Material No	Engineer Number
2		A-4455-BH02L(122)		A-4455-CP02A(208)	22-18-2026	A-4455-CY02A(565)	22-02-7023	A-4455-CY02A(P909)
3	22-15-4036	A-4455-BH 03 L(122)		A-4455-CP 03 A(208)	22-18-2036	A-4455-CY 03 A(565)	22-02-7033	A-4455-CY 03A(P909)
4	22-15-4046	A-4455-BH 04 L(122)		A-4455-CP 04 A(208)	22-18-2046	A-4455-CY 04 A(565)	22-02-7043	A-4455-CY 04A(P909)
5		A-4455-BH 05 L(122)	22-18-2057	A-4455-CP 05 A(208)	22-18-2056	A-4455-CY 05 A(565)	22-02-7053	A-4455-CY 05A(P909)
6	22-15-4066	A-4455-BH 06 L(122)		A-4455-CP 06 A(208)	22-18-2066	A-4455-CY 06 A(565)	22-02-7063	A-4455-CY 06A(P909)
7	22-15-4076	A-4455-BH 07 L(122)		A-4455-CP 07 A(208)	22-18-2076	A-4455-CY 07 A(565)	22-02-7073	A-4455-CY 07A(P909)
8	22-15-4086	A-4455-BH 08 L(122)		A-4455-CP 08 A(208)	22-18-2086	A-4455-CY 08 A(565)	22-02-7083	A-4455-CY 08A(P909)
9		A-4455-BH 09 L(122)		A-4455-CP 09 A(208)	22-18-2096	A-4455-CY 09 A(565)	22-02-7093	A-4455-CY 09A(P909)
10		A-4455-BH 10 L(122)		A-4455-CP 10 A(208)	22-18-2106	A-4455-CY 10 A(565)	22-02-7103	A-4455-CY 10A(P909)
11	22-15-4116	A-4455-BH 11 L(122)		A-4455-CP 11 A(208)	22-18-2116	A-4455-CY 11 A(565)	22-02-7113	A-4455-CY 11A(P909)
12	22-15-4126	A-4455-BH 12 L(122)		A-4455-CP 12 A(208)	22-18-2126	A-4455-CY 12 A(565)	22-02-7123	A-4455-CY 12A(P909)
13		A-4455-BH 13 L(122)		A-4455-CP 13 A(208)	22-18-2136	A-4455-CY 13 A(565)	22-02-7133	A-4455-CY 13A(P909)
14	22-15-4146	A-4455-BH 14 L(122)		A-4455-CP 14 A(208)	22-18-2146	A-4455-CY 14 A(565)	22-02-7143	A-4455-CY 14A(P909)
15	22-15-4156	A-4455-BH 15 L(122)		A-4455-CP 15 A(208)	22-18-2156	A-4455-CY 15 A(565)	22-02-7153	A-4455-CY 15A(P909)
16		A-4455-BH 16 L(122)		A-4455-CP 16 A(208)	22-18-2166	A-4455-CY 16 A(565)	22-02-7163	A-4455-CY 16A(P909)
17	22-15-4176	A-4455-BH 17 L(122)		A-4455-CP 17 A(208)	22-18-2176	A-4455-CY 17 A(565)	22-02-7173	A-4455-CY 17A(P909)
18		A-4455-BH 18 L(122)		A-4455-CP 18 A(208)	22-18-2186	A-4455-CY 18 A(565)	22-02-7183	A-4455-CY 18A(P909)
19		A-4455-BH 19 L(122)		A-4455-CP 19 A(208)	22-18-2196	A-4455-CY 19 A(565)	22-02-7193	A-4455-CY 19A(P909)
20		A-4455-BH 20 L(122)		A-4455-CP 20 A(208)	22-18-2206	A-4455-CY 20 A(565)	22-02-7203	A-4455-CY 20A(P909)
21		A-4455-BH 21 L(122)		A-4455-CP 21 A(208)	22-18-2216	A-4455-CY 21 A(565)	22-02-7213	A-4455-CY 21A(P909)
22		A-4455-BH 22 L(122)		A-4455-CP 22 A(208)	22-18-2226	A-4455-CY 22 A(565)	22-02-7223	A-4455-CY 22A(P909)
23		A-4455-BH 23 L(122)		A-4455-CP 23 A(208)	22-18-2236	A-4455-CY 23 A(565)	22-02-7233	A-4455-CY 23A(P909)
24		A-4455-BH 24 L(122)		A-4455-CP 24 A(208)	22-18-2246	A-4455-CY 24 A(565)	22-02-7243	A-4455-CY 24A(P909)
25		A-4455-BH 25 L(122)		A-4455-CP 25 A(208)	22-18-2256	A-4455-CY 25 A(565)	22-02-7253	A-4455-CY 25A(P909)

REV:	ECR/ECN INFORMATION:	TITLE:	KK 100 PCB ASSY 4455 SERIES DWG	SHEET No.
D5	EC No.: UCP2008-1384			- 11 -
	DATE: 12/21/2007			
DOCUMENT NUMBER:		CREATED / REVISED BY:	CHECKED BY:	APPROVED BY:
SDA-4455		ADERR	AELHAG	FSMITH



KK 100 PCB ASSY 2-25 CKT

4455 SERIES

	Assy Proc:	TOP ENTRY	Assy Proc:	TOP ENTRY	Assy Proc:	TOP ENTRY	Assy Proc:	TOP ENTRY
	Hooks Cut:	NO	Hooks Cut:	NO	Hooks Cut:	NO	Hooks Cut:	YES
	Housing No:	4455-BN	Housing No:	4455-NR	Housing No:	4455-N	Housing No:	4455-N
	Terminal No:	4316-4(P909)	Terminal No:	4316-4(P909)	Terminal No:	6516-4(228)	Terminal No:	4316-4(208)
	Dim C:	3.35 / .132	Dim C:	3.35 / .132	Dim C:	3.35 / .132	Dim C:	3.35 / .132
	Plating:	P909	Plating:	P909	Plating:	228	Plating:	208
	Packaging:	PK-44646-001	Packaging:	PK-44646-001	Packaging:	PK-44646-001	Packaging:	PK-44646-003
	Voids:	NO	Voids:	NO	Voids:	NO	Voids:	NO
Ckts	Material No	Engineer Number	Material No	Engineer Number	Material No	Engineer Number	Material No	Engineer Number
2	22-15-4028	A-4455-CB02A(P909)	22-65-3020	A-4455-CR02A(P909)	22-18-2024	A-4455-CZ02B(228)	22-18-7023	A-4455-CY02A(208)
3	22-15-4038	A-4455-CB 03A(P909)	22-65-3030	A-4455-CR 03A(P909)	22-18-2034	A-4455-CZ 03 B(228)	22-18-7033	A-4455-CY 03 A(208)
4	22-15-4048	A-4455-CB 04A(P909)	22-65-3040	A-4455-CR 04A(P909)	22-18-2044	A-4455-CZ 04 B(228)	22-18-7043	A-4455-CY 04 A(208)
5	22-15-4058	A-4455-CB 05A(P909)	22-65-3050	A-4455-CR 05A(P909)	22-18-2054	A-4455-CZ 05 B(228)	22-18-7053	A-4455-CY 05 A(208)
6	22-15-4068	A-4455-CB 06A(P909)	22-65-3060	A-4455-CR 06A(P909)	22-18-2064	A-4455-CZ 06 B(228)	22-18-7063	A-4455-CY 06 A(208)
7	22-15-4078	A-4455-CB 07A(P909)	22-65-3070	A-4455-CR 07A(P909)	22-18-2074	A-4455-CZ 07 B(228)	22-18-7073	A-4455-CY 07 A(208)
8	22-15-4088	A-4455-CB 08A(P909)	22-65-3080	A-4455-CR 08A(P909)	22-18-2084	A-4455-CZ 08 B(228)	22-18-7083	A-4455-CY 08 A(208)
9	22-15-4098	A-4455-CB 09A(P909)	22-65-3090	A-4455-CR 09A(P909)	22-18-2094	A-4455-CZ 09 B(228)	22-18-7093	A-4455-CY 09 A(208)
10	22-15-4108	A-4455-CB 10A(P909)	22-65-3100	A-4455-CR 10A(P909)	22-18-2104	A-4455-CZ 10 B(228)	22-18-7103	A-4455-CY 10 A(208)
11	22-15-4118	A-4455-CB 11A(P909)	22-65-3110	A-4455-CR 11A(P909)	22-18-2114	A-4455-CZ 11 B(228)	22-18-7113	A-4455-CY 11 A(208)
12	22-15-4128	A-4455-CB 12A(P909)	22-65-3120	A-4455-CR 12A(P909)	22-18-2124	A-4455-CZ 12 B(228)	22-18-7123	A-4455-CY 12 A(208)
13	22-15-4138	A-4455-CB 13A(P909)	22-65-3130	A-4455-CR 13A(P909)	22-18-2134	A-4455-CZ 13 B(228)	22-18-7133	A-4455-CY 13 A(208)
14	22-15-4148	A-4455-CB 14A(P909)	22-65-3140	A-4455-CR 14A(P909)	22-18-2144	A-4455-CZ 14 B(228)	22-18-7143	A-4455-CY 14 A(208)
15	22-15-4158	A-4455-CB 15A(P909)	22-65-3150	A-4455-CR 15A(P909)	22-18-2154	A-4455-CZ 15 B(228)	22-18-7153	A-4455-CY 15 A(208)
16	22-15-4168	A-4455-CB 16A(P909)	22-65-3160	A-4455-CR 16A(P909)	22-18-2164	A-4455-CZ 16 B(228)	22-18-7163	A-4455-CY 16 A(208)
17	22-15-4178	A-4455-CB 17A(P909)	22-65-3170	A-4455-CR 17A(P909)	22-18-2174	A-4455-CZ 17 B(228)	22-18-7173	A-4455-CY 17 A(208)
18	22-15-4188	A-4455-CB 18A(P909)	22-65-3180	A-4455-CR 18A(P909)	22-18-2184	A-4455-CZ 18 B(228)	22-18-7183	A-4455-CY 18 A(208)
19	22-15-4198	A-4455-CB 19A(P909)	22-65-3190	A-4455-CR 19A(P909)	22-18-2194	A-4455-CZ 19 B(228)	22-18-7193	A-4455-CY 19 A(208)
20	22-15-4208	A-4455-CB 20A(P909)	22-65-3200	A-4455-CR 20A(P909)	22-18-2204	A-4455-CZ 20 B(228)	22-18-7203	A-4455-CY 20 A(208)
21	22-15-4218	A-4455-CB 21A(P909)	22-65-3210	A-4455-CR 21A(P909)	22-18-2214	A-4455-CZ 21 B(228)	22-18-7213	A-4455-CY 21 A(208)
22	22-15-4228	A-4455-CB 22A(P909)	22-65-3220	A-4455-CR 22A(P909)	22-18-2224	A-4455-CZ 22 B(228)	22-18-7223	A-4455-CY 22 A(208)
23	22-15-4238	A-4455-CB 23A(P909)	22-65-3230	A-4455-CR 23A(P909)	22-18-2234	A-4455-CZ 23 B(228)	22-18-7233	A-4455-CY 23 A(208)
24	22-15-4248	A-4455-CB 24A(P909)	22-65-3240	A-4455-CR 24A(P909)	22-18-2244	A-4455-CZ 24 B(228)	22-18-7243	A-4455-CY 24 A(208)
25	22-15-4258	A-4455-CB 25A(P909)	22-65-3250	A-4455-CR 25A(P909)	22-18-2254	A-4455-CZ 25 B(228)	22-18-7253	A-4455-CY 25 A(208)

REV:	ECR/ECN INFORMATION:	TITLE:	KK 100 PCB ASSY 4455 SERIES DWG	SHEET No.
D5	EC No.: UCP2008-1384			- 12 -
	DATE: 12/21/2007			
DOCUMENT NUMBER:		CREATED / REVISED BY:	CHECKED BY:	APPROVED BY:
SDA-4455		ADERR	AELHAG	FSMITH



KK 100 PCB ASSY 2-25 CKT

4455 SERIES

	Assy Proc:	TOP ENTRY	Assy Proc:	Assy Proc:	Assy Proc:	Assy Proc:	RIGHT ANGLE
	Hooks Cut:	YES	Hooks Cut:	Hooks Cut:	Hooks Cut:	Hooks Cut:	NO
	Housing No:	4455-N	Housing No:	Housing No:	Housing No:	Housing No:	4455-AN
	Terminal No:	6516-4(228)	Terminal No:	Terminal No:	Terminal No:	Terminal No:	6516-4(P909)
	Dim C:	3.35 / .132	Dim C:	Dim C:	Dim C:	Dim C:	3.35 / .132
	Plating:	228	Plating:	Plating:	Plating:	Plating:	P909
	Packaging:	PK-44646-003	Packaging:	Packaging:	Packaging:	Packaging:	PK-44646-001
	Voids:	NO	Voids:	Voids:	Voids:	Voids:	NO
Ckts	Material No	Engineer Number	Material No	Material No	Engineer Number	Material No	Engineer Number
2	22-18-7021	A-4455-CY02B(228)					
3	22-18-7031	A-4455-CY 03 B(228)					
4	22-18-7041	A-4455-CY 04 B(228)					
5	22-18-7051	A-4455-CY 05 B(228)					
6	22-18-7061	A-4455-CY 06 B(228)					
7	22-18-7071	A-4455-CY 07 B(228)					
8	22-18-7081	A-4455-CY 08 B(228)					
9	22-18-7091	A-4455-CY 09 B(228)					
10	22-18-7101	A-4455-CY 10 B(228)					
11	22-18-7111	A-4455-CY 11 B(228)					
12	22-18-7121	A-4455-CY 12 B(228)					
13	22-18-7131	A-4455-CY 13 B(228)					
14	22-18-7141	A-4455-CY 14 B(228)					
15	22-18-7151	A-4455-CY 15 B(228)					
16	22-18-7161	A-4455-CY 16 B(228)					
17	22-18-7171	A-4455-CY 17 B(228)					
18	22-18-7181	A-4455-CY 18 B(228)					
19	22-18-7191	A-4455-CY 19 B(228)					
20	22-18-7201	A-4455-CY 20 B(228)					
21	22-18-7211	A-4455-CY 21 B(228)					
22	22-18-7221	A-4455-CY 22 B(228)					
23	22-18-7231	A-4455-CY 23 B(228)					
24	22-18-7241	A-4455-CY 24 B(228)					
25	22-18-7251	A-4455-CY 25 B(228)					
						22-14-2079	A-4455-AA07B(P909)
						22-14-2089	A-4455-AA 08 B(P909)
						22-14-2099	A-4455-AA 09 B(P909)
						22-14-2109	A-4455-AA 10 B(P909)
						22-14-2119	A-4455-AA 11 B(P909)
						22-14-2129	A-4455-AA 12 B(P909)
						22-14-2139	A-4455-AA 13 B(P909)
						22-14-2149	A-4455-AA 14 B(P909)
						22-14-2159	A-4455-AA 15 B(P909)
						22-14-2169	A-4455-AA 16 B(P909)
						22-14-2179	A-4455-AA 17 B(P909)
						22-14-2189	A-4455-AA 18 B(P909)
						22-14-2199	A-4455-AA 19 B(P909)
						22-14-2209	A-4455-AA 20 B(P909)
						22-14-2219	A-4455-AA 21 B(P909)
						22-14-2229	A-4455-AA 22 B(P909)
						22-14-2239	A-4455-AA 23 B(P909)
						22-14-2249	A-4455-AA 24 B(P909)
						22-14-2259	A-4455-AA 25 B(P909)

REV:	ECR/ECN INFORMATION:	TITLE:		SHEET No.
D5	EC No.: UCP2008-1384		KK 100 PCB ASSY 4455 SERIES DWG	- 13 -
	DATE: 12/21/2007			
DOCUMENT NUMBER:	CREATED / REVISED BY:	CHECKED BY:	APPROVED BY:	
SDA-4455	ADERR	AELHAG	FSMITH	



KK 100 PCB ASSY 2-25 CKT

4455 SERIES

Ckts	Assy Proc:		TOP ENTRY		Assy Proc:		RIGHT ANGLE		Assy Proc:		RIGHT ANGLE	
	Material No	Engineer Number	Material No	Engineer Number	Material No	Engineer Number	Material No	Engineer Number	Material No	Engineer Number	Material No	Engineer Number
2												
3												
4												
5												
6			22-02-3068	A-4455-CW06A(P909)-2								
7			50-29-0004	A-4455-CW07A(P909)-2								
8												
9												
10												
11												
12												
13												
14												
15												
16												
17												
18												
19												
20												
21												
22												
23												
24												
25												

REV:	ECR/ECN INFORMATION:	<u>TITLE:</u>	KK 100 PCB ASSY 4455 SERIES DWG	<u>SHEET No.</u>
D5	EC No.: UCP2008-1384			- 15 -
	DATE: 12/21/2007			
<u>DOCUMENT NUMBER:</u>		<u>CREATED / REVISED BY:</u>	<u>CHECKED BY:</u>	<u>APPROVED BY:</u>
SDA-4455		ADERR	AELHAG	FSMITH



KK 100 PCB ASSY 2-25 CKT

4455 SERIES

	Assy Proc:		Assy Proc:	TOP ENTRY	Assy Proc:	BOTTOM ENTRY	Assy Proc:	
	Hooks Cut:	YES	Hooks Cut:	YES	Hooks Cut:	NO	Hooks Cut:	
	Housing No:	4455-N	Housing No:	4455-N	Housing No:	4455-N2	Housing No:	
	Terminal No:	6516-4(P909)	Terminal No:	4316-4(P909)	Terminal No:	4316-3B(P909)	Terminal No:	
	Dim C:	3.35 / .132	Dim C:	3.35 / .132	Dim C:	.132 / 3.35	Dim C:	
	Plating:	P909	Plating:	P909	Plating:	P909	Plating:	
	Packaging:	PK-44646-003	Packaging:	PK-44646-003	Packaging:	PK-44646-001	Packaging:	
	Voids:	NO	Voids:	YES IN CKT 2	Voids:	YES IN CKT 10	Voids:	
Ckts	Material No	Engineer Number	Material No	Engineer Number	Material No	Engineer Number	Material No	Engineer Number
2		A-4455-CY02B(P909)						
3		A-4455-CY 03B(P909)						
4		A-4455-CY 04B(P909)						
5	50-29-1553	A-4455-CY 05B(P909)						
6	50-29-1554	A-4455-CY 06B(P909)	22-15-5065	A-4455-CY06A(P909)-2				
7		A-4455-CY 07B(P909)						
8		A-4455-CY 08B(P909)						
9		A-4455-CY 09B(P909)						
10		A-4455-CY 10B(P909)						
11		A-4455-CY 11B(P909)			50-36-1881	A-4455-BH11D(P909)-10		
12		A-4455-CY 12B(P909)						
13		A-4455-CY 13B(P909)						
14		A-4455-CY 14B(P909)						
15		A-4455-CY 15B(P909)						
16		A-4455-CY 16B(P909)						
17		A-4455-CY 17B(P909)						
18		A-4455-CY 18B(P909)						
19		A-4455-CY 19B(P909)						
20		A-4455-CY 20B(P909)						
21		A-4455-CY 21B(P909)						
22		A-4455-CY 22B(P909)						
23		A-4455-CY 23B(P909)						
24		A-4455-CY 24B(P909)						
25		A-4455-CY 25B(P909)						

REV:	ECR/ECN INFORMATION:	TITLE:		SHEET No.
D5	EC No.: UCP2008-1384		KK 100 PCB ASSY 4455 SERIES DWG	- 16 -
	DATE: 12/21/2007			
DOCUMENT NUMBER:	CREATED / REVISED BY:	CHECKED BY:	APPROVED BY:	
SDA-4455	ADERR	AELHAG	FSMITH	